

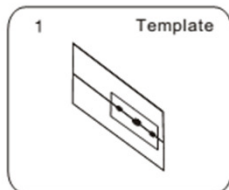
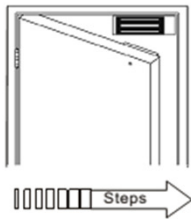
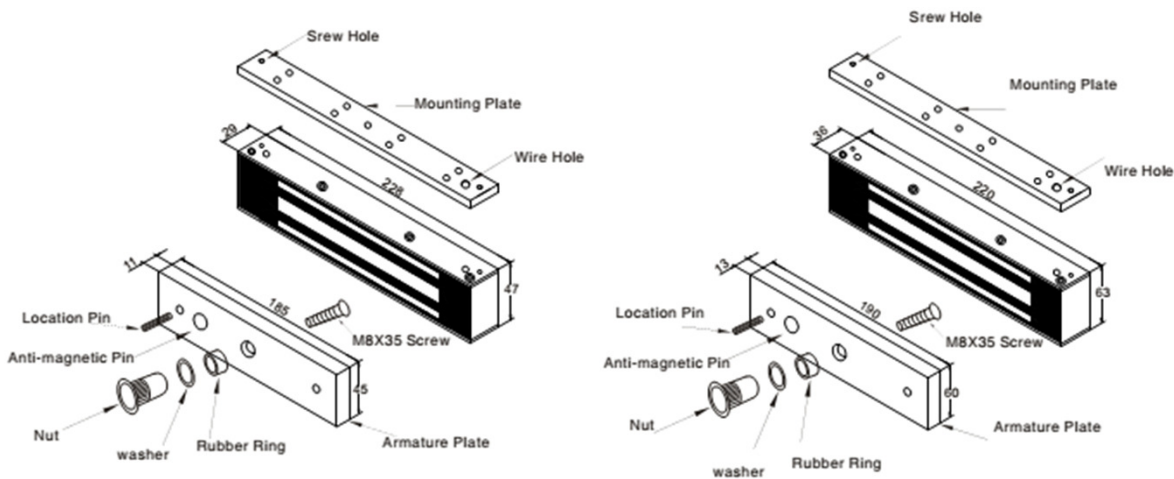
EM-5120C Water Proof



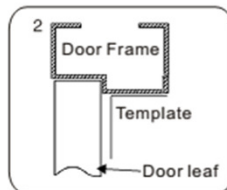
Technical Specifications :

Dimensions:	220Lx63Wx36H(mm)
Armature Plate:	190Lx60Wx13H(mm)
Holding Force:	500kg(1200Lbs)
Voltage:	12/24VDC \pm 10%
Power Consumption:	12V/220mA, 24V/190mA
Door Status Sensor:	(NO/ NC/ COM)
Surface Temp:	\leq +20°C
Operating Temp:	10 ~ +55°C (14-131F)
Suitable Humidity:	0~90% (Non-condensing)
Material For Shell:	Anodized Aluminium
Material For Magnetic:	Zinc
Weight:	4.5 kgs

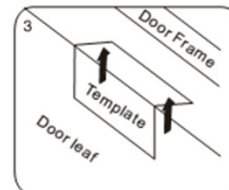
EM-5120C Water Proof



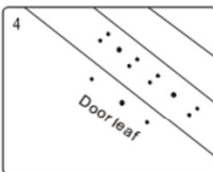
1 Template
Fold the plate to 90° .



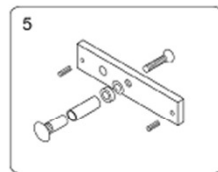
2 Door Frame
Template
Door leaf
Close the door first, then place the upper side of template on door frame, while adjust the left side next to the door leaf.



3 Door Frame
Template
Door leaf
Mark screw positions of armature plate and magnetic lock on door leaf and door frame respectively.



4 Door leaf
Drill holes based on the marked positions.

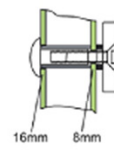


5 Door leaf
Make a combination based on the picture.

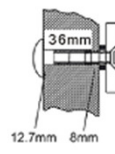
Hollow Metal Door

Wooden Door

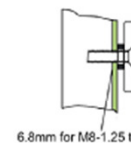
Metal Surface Door



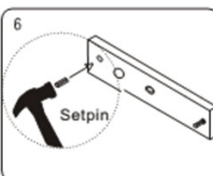
16mm 8mm
Drill a hole
Inside: Diameter is 8mm
Outside: Diameter is 16mm



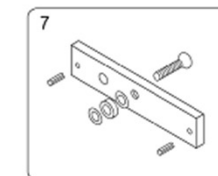
36mm 8mm
12.7mm 8mm
Drill a hole
Inside: Diameter is 8mm
Outside: Diameter is 12.7mm



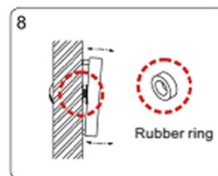
6.8mm for M8-1.25 thread
Inside: Drill a hole diameter is 8mm folding the plastic straight pin



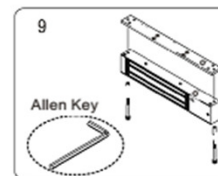
6 Setpin
Strike the pin into the armature plate slightly (to avoid movement).



7
Make a combination based on the picture (add washer accordingly). The rubber ring must be added.



8 Rubber ring
Place the rubber ring between armature plate and door leaf.



9 Allen Key
Use Allen key to remove the mounting plate from lock body.