

**LOCKTRONIX™**

Laser Night Vision & Thermal Imaging  
Visibility in Complete Darkness

---

## Jackwell Group

Room 3511, Hong Kong Plaza, 188 Connaught Road West, Hong Kong

Email : [jeff@locktronixusa.com](mailto:jeff@locktronixusa.com)

Web : [www.locktronixusa.com](http://www.locktronixusa.com)

Tel : (852) 2858 2966

Fax : (852) 2559 8251



## Specification :

Model	LOT-AIO200	LOT-AIO300	LOT-AIO400
Effecting distance	Night vision 200m,	Night vision 300m,	Night vision 400m,
	Day vision 400m	Day vision 500m	Day vision 600m
Image component	Automatic colour to B/W camera Lowest illumination 0.07Lux.	Automatic colour to B/W camera Lowest illumination 0.09Lux	Automatic colour to B/W camera Lowest illumination 0.1Lux
Image lens	Optical 18X Zoom, f=4.1~73.8; F1.4~F3.0; 2.8°~ 48°	Optical 26X Zoom, f=3.5~91; F1.6~F3.8; 2.3°~ 55°	Optical 36X Zoom, f=3.4~122.4; F1.6~F4.5; 1.7° ~57.8°
Laser power	Two circuits drive, stable voltage and stable current, power on 1s, photosensitive outside control, 6W power consumption		
Laser lens	20mm laser telephoto lens, 15X F 2.0, Plating multilayer near infrared ,laser coupling >95%		
Laser light	Power 2W, wave length 810nm, Illumination angle 2~30° continuous Random microlens array technology for homogenization	Power 3W, wave length 810nm, illumination angle 1~17° continuous Multi-quantum well laser combine with MM optical fibre technology to uniformize laser speckle	
	Real time synchronized zooming between laser and camera Laser illuminator focus can be adjusted independently or simultaneously Respond time 0.1s		
External optic axis adjustment	External MMA fine-tuning structure Precision: 0.02°;		
Pan / Tilt	Pan 360° ; Tilt 180° Pan 0~80°/sec, Tilt 0~60°/sec		
Others	128 preset position, 6 tracking paths, 30s self checking, 2400-9600 baud rate, PELCO D - P protocol, OSD menu setup, With windscreen wiper function Working temperature: -25℃~+55℃; Storage temperature: -40℃~+65℃; Anti impact: 4G, suitable for mobile, Anti salt fog: spraying 48 hours under PH6.5~7.2; Power supply AC24V, 2.5A; Weight 6.5kg.		



# LOT-AIO

## Laser Night Vision Monitoring



## Demonstration :



## Specification :

Model	LOT-AIOD400	LOT-AIOD250-NR
Effecting distance	Night vision 400m, Day vision 600m	Night vision 250m, Day vision 600m (No red exposure)
Image component	Automatic colour to B/W camera Lowest illumination 0.1Lux	
Image lens	Optical 36X Zoom, Digital 12X Zoom (Total 432X) f=3.4~122.4; F1.6~F4.5; 1.7°~57.8°	
Laser power	Two circuits drive, stable voltage and stable current, power on 1s, 6W power consumption	
Laser lens	20mm laser telephoto lens, 20X F 1.0, Plating multilayer near infrared ,laser coupling >95%	
Laser light	Power 4W, wave length 810nm, Illumination angle 1~20° continuous Random microlens array technology for homogenization + Multi-quantum well laser combine with MM optical fibre technology to uniformize laser speckle	Power 6W, wave length 940nm,
Intelligent dual zooming function	Real time synchronized zooming between laser and camera Laser illuminator focus can be adjusted independently or simultaneously Respond time 0.1s	
External optic axis adjustment	External MMA fine-tuning structure Precision: 0.02°;	
Pan / Tilt	Pan 360° ; Tilt 180° Pan 0~80°/sec, Tilt 0~60°/sec	
Others	128 preset position, 6 tracking paths, 30s self checking, 2400-9600 baud rate, PELCO D · P protocol, OSD menu setup, With windscreen wiper function Working temperature: -25℃~+55℃; Storage temperature: -40℃~+65℃; Anti impact: 4G, suitable for mobile, Anti salt fog: spraying 48 hours under PH6.5~7.2; Power supply AC/DC 24V, 2.5A; Weight 6.5kg.	



# LOT-AIOD

## Laser Night Vision Monitoring



## Demonstration :





## Specification :

Model	LOT-AIOW200	LOT-AIOW250	LOT-AIOW300
Effecting distance	Night vision 200m, Day vision 400m	Night vision 250m, Day vision 500m	Night vision 300m, Day vision 600m
Image component	Automatic colour to B/W camera Lowest illumination 0.07Lux.	Automatic colour to B/W camera Lowest illumination 0.09Lux	Automatic colour to B/W camera Lowest illumination 0.1Lux
Image lens	Optical 18X Zoom, f=4.1~73.8; F1.4~F3.0; 2.8°~ 48°	Optical 26X Zoom, f=3.5~91; F1.6~F3.8; 2.3°~ 55°	Optical 36X Zoom, f=3.4~122.4; F1.6~F4.5; 1.7°~ 57.8°
Laser power	Two circuits drive, stable voltage and stable current, power on 1s, 6W power consumption		
Laser lens	20mm laser telephoto lens, 30X F 1.0, Plating multilayer near infrared ,laser coupling >95%		
Laser light	Power 4W, wave length 810nm, illumination angle 2~45° continuous Random microlens array technology for homogenization		
Intelligent dual zooming function	Real time synchronized zooming between laser and camera Laser illuminator focus can be adjusted independently or simultaneously Respond time 0.1s		
External optic axis adjustment	External MMA fine-tuning structure Precision: 0.02°;		
Pan / Tilt	Pan 360° ; Tilt 180° Pan 0~80°/sec, Tilt 0~60°/sec		
Others	128 preset position, 6 tracking paths, 30s self checking, 2400-9600 baud rate, PELCO D · P protocol, OSD menu setup, With windscreen wiper function Working temperature: -25℃~+55℃; Storage temperature: -40℃~+65℃; Anti impact: 4G, suitable for mobile, Anti salt fog: spraying 48 hours under PH6.5~7.2; Power supply AC/DC 24V, 2.5A; Weight 6.5kg.		



# LOT-AIOW

## Laser Night Vision Monitoring

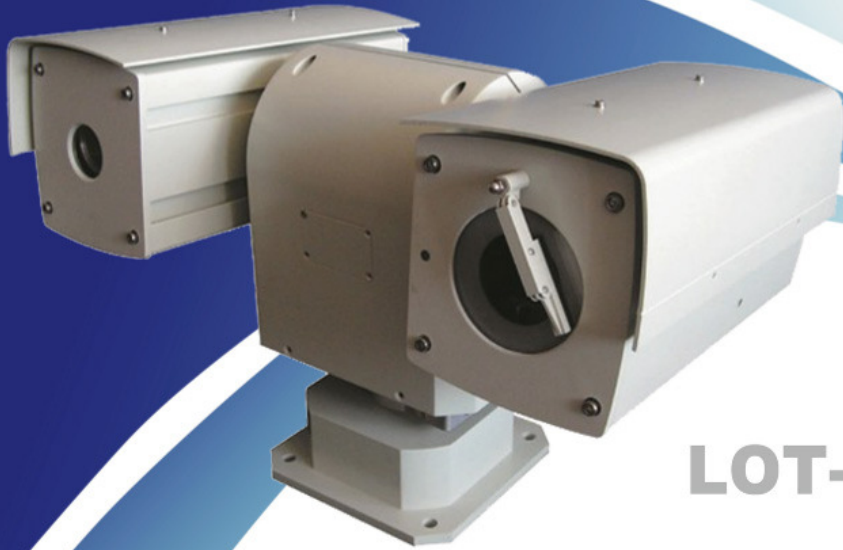


## Demonstration :



## Specification :

Model	LOT-AIOM800	LOT-AIOM500-BR
Effecting distance	Night vision 800m, Day vision 1500m	Night vision 500m, Day vision 600m (Blaze restrain model, able to observe whoever inside the vehicle through the window and vehicle shape clearly during night)
Image component	Resolution : 520 (Colour) ; 540 (Black/White) Lowest illumination 0.1Lux (Colour) 0.006Lux (B/W)	Automatic colour to B/W camera Lowest illumination 0.1Lux
Image lens	Optical 21X Zoom, f=10~210mm; F1.5~560; 26.8°~1.35°	Optical 36X Zoom, Digital 12X Zoom (Total 432X) f=3.4~122.4; F1.6~F4.5; 1.7°~57.8°
Laser power	Two circuits drive, stable voltage and stable current, power on 1s	
Laser lens	50mm laser telephoto lens, 30X F 2.0	20mm laser telephoto lens, 15X F 2.0
Laser light	Power 6W, wave length 810nm, Illumination angle 0.5~17° continuous Multi-quantum well laser combine with MM optical fibre technology to uniformize laser speckle	
Intelligent dual zooming function	Real time synchronized zooming between laser and camera Laser illuminator focus can be adjusted independently or simultaneously Respond time 0.1s	
External optic axis adjustment	External MMA fine-tuning structure Precision: 0.02°;	
Pan / Tilt	Pan 360° ; Tilt 180° Pan 0~80°/sec, Tilt 0~60°/sec	
Others	128 preset position, 6 tracking paths, 30s self checking, 2400-9600 baud rate, PELCO D - P protocol, OSD menu setup, With windscreen wiper function Working temperature: -25℃~+55℃; Storage temperature: -40℃~+65℃; Anti impact: 4G, suitable for mobile, Anti salt fog: spraying 48 hours under PH6.5~7.2; Power supply AC/DC 24V, 2.5A; Weight 6.5kg.	



# LOT-AIOM

## Laser Night Vision Monitoring

## Demonstration :



## Specification :

Model	LOT-AIOHD200	LOT-AIOHD400
Effecting distance	Night vision 200m,	Night vision 400m,
	Day vision 600m	Day vision 600m
Image component	Automatic colour to B/W camera Lowest illumination 0.1Lux.(Colour) 0.01Lux.(B/W) Sensor : 1/3" CCD; 1.3 MEGA Pixel Video format : H.264 ; Video resolution : 1280x720 (25fps), support dual-stream	
Image lens	Optical 18X Zoom, Focus=4.7~84.6mm; F1.6~F2.8;	
Laser power	Two circuits drive, stable voltage and stable current, power on 1s	
Laser lens	20mm laser telephoto lens, 20X F 2.0, Plating multilayer near infrared ,laser coupling >95%	
Laser light	Wave length 810nm, illumination angle 5~30° continuous Multi-quantum well laser combine with MM optical fiber technology to uniformize laser speckle	
Intelligent dual zooming function	Real time synchronized zooming between laser and camera Laser illuminator focus can be adjusted independently or simultaneously Respond time 0.1s	
External optic axis adjustment	External MMA fine-tuning structure Precision: 0.02°;	
Pan / Tilt	Pan 360° ; Tilt 180° Pan 0~80°/sec, Tilt 0~60°/sec	
Others	128 preset position, 6 tracking paths, 30s self checking, 2400-9600 baud rate Build-in web server With windscreen wiper function Working temperature: -25℃~+55℃; Storage temperature: -40℃~+65℃; Anti impact: 4G, suitable for mobile, Anti salt fog: spraying 48 hours under PH6.5~7.2; Power supply AC24V, 2.5A; Weight 6.5kg.	



# LOT-AIOHD

## Laser Night Vision Monitoring



## Demonstration :





## Specification :

Model	LOT-AIOTI300	LOT-AIOTI800
Effecting distance	300m (Identify human) 600m (Identify vehicles)	800m (Identify human) 2000m (Identify vehicles)
Infrared Camera	Resolution 324 x 256 pixel Spectrum scope : 8~ 14μm Temp. sensitivity : (NETD) 85mK Lens : 20mm F1.4GE lens, FOV 36° x 27° Electronic Magnification : 2X Imaging processor : AGC, DDE, 9 pseudo colour; PAL compound video output	Resolution 324 x 256 pixel Spectrum scope : 8~ 14μm Temp. sensitivity : (NETD) 50mK Lens : 50mm F1.4GE lens, FOV 36° x 27° Electronic Magnification : 2X Imaging processor : AGC, DDE, 9 pseudo colour; PAL compound video output
Visible light camera	SONY EX-View super low illuminating level CCD camera, automatic colour to black Valid pixel 440 thousand Minimum lighting level 0.1 Lux Optical 36X, 12 digital ( Totally 432X) F= 3.4~122.4mm, F1.6~4.5 FOV 1.7°~57.8°	
Integarated Pan / Tilt	Pan 360° ; Tilt 180° Pan 0~80°/sec, Tilt 0~60°/sec RS485 controlling signal input; BNC video output; 220V power supply	
Others	128 preset position, 6 tracking paths, 30s self checking, 2400-9600 baud rate, PELCO D · P protocol, OSD menu setup, With windscreen wiper function Working temperature: -25℃~+55℃; Storage temperature: -40℃~+65℃; Anti impact: 4G, suitable for mobile, Anti salt fog: spraying 48 hours under PH6.5~7.2; Power supply AC/DC 24V, 2.5A; Weight 6.5kg.	



# LOT-AIOTI

## Laser Thermal Imaging



## Demonstration :





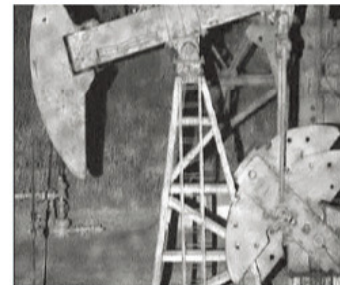
# LOT-LL

## Laser Night Vision Monitoring

### Specification :

Model	LOT-LL300	LOT-LL500
Effecting distance	Night vision 300m ; Day vision 500m	Night vision 500m ; Day vision 1000m
Infrared camera	Power: 3W Wave length: 810nm Illuminating angle: 2-17° Multi-quantum well laser combine with MM optical fibre technology to uniformize laser speckle	Power: 4W Wave length: 810nm Illuminating angle: 1-17° Multi-quantum well laser combine with MM optical fibre technology to uniformize laser speckle
Laser lens	20mm laser telephoto lens ; F 2.0	
Laser power	Dual circuits drive, stable voltage and stable current, power on 1s	
Imaging components	1/3" infrared enhancement CCD; Integrated ICR double filters switch Pixel : 795 x 596 Resolution : 560 TV lines (Day mode), 700 TV lines (Night mode) Lowest illumination : 0.02 lux (Colour), 0.009 lux (B/W)	1/2" infrared enhancement CCD; Integrated ICR double filters switch Pixel : 752 x 582 Resolution : 540 TV lines (Day mode), 600 TV lines (Night mode) Lowest illumination : 0.02 lux (Colour), 0.009 lux (B/W)
Imaging lens	Focus 8~120mm, 15x F 1.8 ~360; FOV: 33~2.3°	Focus 11~200mm, 18x F 1.9 ~360; FOV: 32.1~1.9°
Intelligent dual zooming function	Real time synchronized zooming between laser and camera ; Respond time 0.1s Laser illuminator focus can be adjusted independently or simultaneously	
External optic axis adjustment	External MMA fine-tuning structure Precision: 0.02°	
Housing	High precision aluminum alloy shell Microlite optical glass Multilayer AR film and PTA cover paint ; IP66	
Pan / Tilt decoder	Pan 355° ; Tilt +6° ~ -70° ; Pan 7.5°/sec, Tilt 6°/sec RS485 controlling signal input; BNC video output; 32 preset position, 1 tracking paths PELCO-D, Pelco-D, AD, YAAN; Optional baud rate	Pan 355° ; Tilt +10° ~ -60° ; Pan 9°/sec, Tilt 4°/sec RS485 controlling signal input; BNC video output; 50 preset position, 1 tracking paths PELCO-D, Pelco-D, AD, YAAN; Optional baud rate
Others	Working temperature: -25°C~+55°C; Storage temperature: -40°C~+65°C; Humidity : <90% Anti impact: 150m/s <sup>2</sup> 11mx ; Anti-vibration : 12m/s <sup>2</sup> 5~200Hz Anti salt fog: spraying 48 hours under PH6.5~7.2 Power supply AC 220V	
	Power consumption 35W Weight 12.5kgs	Power consumption 50W Weight 18.5kgs
Customization	No red glow; anti-explosion ; automatic focus .etc	

### Demonstration :





## Specification :

Model	LOT-LL1000	LOT-LL1500
Effecting distance	Night vision 1000m ; Day vision 2000m	Night vision 1500m ; Day vision 3000m
Infrared camera	Power: 6W Wave length: 810nm Illuminating angle: 0.5-17° Multi-quantum well laser combine with MM optical fibre technology to uniformize laser speckle	Power: 8W Wave length: 810nm Illuminating angle: 0.5-17° Multi-quantum well laser combine with MM optical fibre technology to uniformize laser speckle
Laser lens	30x, 50mm laser telephoto lens ; F 2.0	
Laser power	Dual circuits drive, stable voltage and stable current, power on 1s	
Imaging components	1/2" infrared enhancement CCD; Integrated ICR double filters switch ( Colour ; B/W ; Auto Colour to B/W ; External adjustment optional ) Pixel : 752 x 582 Resolution : 540 TV lines (Day mode), 600 TV lines (Night mode) Lowest illumination : 0.02 lux (Colour), 0.0009 lux (B/W)	
Imaging lens	Focus 17~230mm, 22x F 2.3-3000; FOV: 25~1.2°	Focus 23~500mm, 22x F 3.1~3000; FOV: 18~1.0°
Intelligent dual zooming function	Real time synchronized zooming between laser and camera Laser illuminator focus can be adjusted independently or simultaneously Respond time 0.1s	
External optic axis adjustment	External MMA fine-tuning structure Precision: 0.02°	
Housing	High precision aluminum alloy shell Microlite optical glass Multilayer AR film and PTA cover paint ; IP66	
Pan / Tilt decoder	Pan 360° ; Tilt +10° ~ -70° ; Pan 1~9°/sec, Tilt 1~4°/sec RS485 controlling signal input; BNC video output; 80 preset position, 1 tracking paths ( Max 80 preset point ) PELCO-D, Pelco-D, AD, YAAN; Optional baud rate	
Others	Working temperature: -25°C~+55°C; Storage temperature: -40°C~+65°C; Humidity : <90% Anti impact: 150m/s <sup>2</sup> 11mx ; Anti-vibration : 12m/s <sup>2</sup> 5~200Hz Anti salt fog: spraying 48 hours under PH6.5~7.2 Power supply AC 220V	
	Power consumption 75W Weight 25kgs	Power consumption 80W Weight 30kgs
Customization	No red glow; anti-explosion ; automatic focus .etc	



# LOT-LL

## Laser Night Vision Monitoring

## Demonstration :



## Specification :

Model	LOT-LL2000	LOT-LL3000
Effecting distance	Night vision 2000m ; Day vision 4000m	Night vision 3000m ; Day vision 5000m
Infrared camera	Power: 10W Wave length: 810nm Illuminating angle: 0.3-17° Multi-quantum well laser combine with MM optical fibre technology to uniformize laser speckle	Power: 15W Wave length: 810nm Illuminating angle: 0.3-17° Multi-quantum well laser combine with MM optical fibre technology to uniformize laser speckle
Laser lens	50x, 50mm laser telephoto lens ; F 2.0	
Laser power	Dual circuits drive, stable voltage and stable current, power on 1s	
Imaging components	1/2" infrared enhancement CCD; Integrated ICR double filters switch ( Colour ; B/W ; Auto Colour to B/W ; External adjustment optional ) Pixel : 752 x 582 Resolution : 540 TV lines (Day mode), 600 TV lines (Night mode) Lowest illumination : 0.02 lux (Colour), 0.0009 lux (B/W)	
Imaging lens	Focus 30~750mm, 25x F 4.6~700; FOV: 14~0.62°	Focus 12.5~750mm, 60x F 3.8~700; FOV: 30~0.62°
Intelligent dual zooming function	Real time synchronized zooming between laser and camera ; Respond time 0.1s Laser illuminator focus can be adjusted independently or simultaneously	
External optic axis adjustment	External MMA fine-tuning structure Precision: 0.02°	
Housing	High precision aluminum alloy shell Microlite optical glass Multilayer AR film and PTA cover paint ; IP66	
Pan / Tilt decoder	Pan 360° ; Tilt +45° ~ -45° Pan 0-10°/sec, Tilt 0~8°/sec RS485 controlling signal input; BNC video output; 80 preset position, 8 tracking paths ( Max 80 preset point each track) PELCO-D, Pelco-D, AD, YAAN; Optional baud rate	
Others	Working temperature: -25°C~+55°C; Storage temperature: -40°C~+65°C; Humidity : <90% Anti impact: 150m/s <sup>2</sup> 11mx Anti-vibration : 12m/s <sup>2</sup> 5~200Hz Anti salt fog: spraying 48 hours under PH6.5~7.2 Power supply AC 220V	
	Power consumption 120W Weight 40kgs	Power consumption 150W Weight 40kgs



# LOT-LL

## Laser Night Vision Monitoring



## Demonstration :



## Specification :

Model	LOT-PLTI400	LOT-PLTI600
Effecting distance	Detecting range: 4200m(Vehicles);1600m(Human)	Detecting range: 6600m(Vehicles);1600m(Human)
	Distinguishing range: 1100m(Vehicles);400m(Human)	Distinguishing range: 1650m(Vehicles);600m(Human)
	Recognizing range: 600m(Vehicles);200m(Human)	Detecting range : 870m (Vehicles) ; 300m (Human)
Detector	4th Generation of Uncooled Pyroelectric Focal Plane Array Detector (9Hz, 25Hz Optional) Resolution : 324 x 256 pixels	
	NETD 35mk	NETD 50mk
Image lens	Focus: 100mm ; F: 1.0 FOV: 7.0° x 5.6° Electric focusing	Focus: 100mm ; F: 1.0 FOV: 7.0° x 5.6° Electric focusing (Automatic focusing optional)
	Embedded uniform adjustment circuits (Non-uniform less than< 0.05) Digital image enhancement technology, enhance image details Multiple pseudo colour or Black/White display format Automatic Gain Control (AGC) technology 2x digital zooming	
Interface	RS-485 (PELCO D protocol, Baud rate 2400 bps/s), RS-232 (Optional) PAL compound video output AC 220v/AC24V/DC12V	
Dimensions	300mm x 150mm x 150mm	320mm x 180mm x 180mm
	5 kgs	7.5 kgs
Others	Working temperature: -25℃~+60℃; Storage temperature: -40℃~+85℃; Anti vibration: 15m/s <sup>2</sup> ; 5~200Hz Anti impact: 150m/s <sup>2</sup> ; 11ms Anti salt fog: spraying 48 hours under PH6.5~7.2; Power consumption : 8W IP66	



# LOT-PLTI

## Prime Lens Thermal Imaging



## Demonstration :





## Specification :

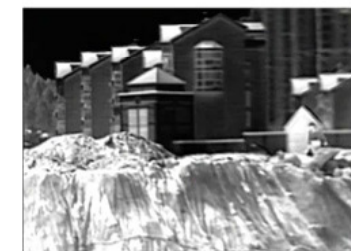


# LOT-ZLTI

## Zoom Lens Thermal Imaging

Model	LOT-ZLTI400	LOT-ZLTI600
Effecting distance	Detecting range: 4200m(Vehicles);1600m(Human) Distinguishing range: 1100m(Vehicles);400m(Human) Recognizing range: 600m(Vehicles);200m(Human)	Detecting range: 6600m(Vehicles);2400m(Human) Distinguishing range: 1650m(Vehicles);600m(Human) Detecting range : 870m (Vehicles) ; 300m (Human)
Detector	4th Generation of Uncooled Pyroelectric Focal Plane Array Detector (9Hz, 25Hz Optional) Resolution : 324 x 256 pixels NETD 50mK	
Image lens	Focus: 20~100mm 5x optical zooming ; F: 1.2 FOV: 36° x 27° ~ 7.0° x 5.6° Electric focusing (Automatic focusing optional)	Focus: 75~150mm 2x optical zooming ; F: 1.2 FOV: 4.6° x 3.5° Electric focusing (Automatic focusing optional)
Image Processor	Embedded uniform adjustment circuits (Non-uniform less than< 0.05) Digital image enhancement technology, enhance image details Multiple pseudo colour or Black/White display format Automatic Gain Control (AGC) technology 2x digital zooming	
Interface	RS-485 (PELCO D protocol, Baud rate 2400 bps/s), RS-232 (Optional) PAL compound video output AC 220v/AC24V/DC12V	
Dimensions	260mm x 114mm x 129mm 5 kgs	320mm x 180mm x 180mm 7.5 kgs
Others	Working temperature: -25℃~+60℃; Storage temperature: -40℃~+85℃; Anti vibration: 15m/s <sup>2</sup> ; 5~200Hz Anti impact: 150m/s <sup>2</sup> ; 11ms Anti salt fog: spraying 48 hours under PH6.5~7.2; Power consumption : 8W IP66	

## Demonstration :



## Specification :



# LOT-LSC200

## Laser Sphere Camera

Model	LOT-LSC200
Technical Indicators	<p>Performance: Night vision distance &gt; 200m (Identify human action); Day vision distance &gt; 400m</p> <p>Focal length: 41~73.8mm, 18x</p> <p>Power input option: DC10.5~DC18/AC24V</p> <p>Power supply: AC24V±10%, I≥2.5A</p> <p>Pixels: 768H x 494V (N format)</p> <p>Protocol: RS485, Pelco Protocol D/P</p> <p>Electronic shutter: Auto/Manual</p> <p>Iris: Auto/Manual</p> <p>Backlight compensation: Auto/Manual</p> <p>White balance: Auto</p> <p>Horizontal Resolution: 480TVL</p> <p>Signal-to-Noise: ≥50db</p> <p>Laser wave length: near infrared (NIR), 808nm</p> <p>Size: 404*280*280</p> <p>Video output: VBS1.0VP-P/75Q</p>
Safety Indicators	<p>Laser spot: When power on, laser spot is biggest (default)</p> <p>Thunder proof: Consistent with GB / T 17626.5-1998 AC power cord less than Grade Three; DC, signal, control and other input line can afford surge (impact) interference of Grade Two</p>
Environmental Indicators	<p>Operating temperature: -25℃ ~ +55℃</p> <p>Storage temperature: -40℃ ~ +85℃</p> <p>Relative humidity: 90%</p> <p>Salt-spray testing: continuously spray 48 hours under PH6.5-7.2</p> <p>Protection Grade: IP66</p> <p>Vibration Indicators: Comply with GB/T 1857.10</p>
Color CCD Camera	Model: 18X, 1/4" Infrared sensitive CCD
Pan / tilt Function	<p>Pan 360° ; Tilt 180°</p> <p>Pan 0~360°/sec, Tilt 0~180°/sec</p> <p>RS485 controlling signal input; 256 Preset point, 6 tracking path</p>
Illuminating function	<p>Illuminator: infrared LASER illuminator</p> <p>Infrared range: 200m</p> <p>Illuminator zoom control: Auto/Manual</p> <p>Laser power consumption: 3W</p> <p>Lighting Angle: 2°~45°electric adjustment(continuous)</p> <p>Illuminating Zoom Speed: 3S quick zoom</p>

## Demonstration :





# LOT-PLR2

## Portable Laser Night Vision Recorder

### Specification :

Model	LOT-PLR2
Effecting distance	Max 200 m with record function
Imaging	<p>Magnification : 5x                  Focus : 50mm                  Resolution : 40 l/mm                  FOV : 5°                  Image sensor : High sensitivity CCD sensor                  Sensor resolution : 752 x 582                  Laser wave length : 940nm, no red glow                  Laser power : Adjustable</p>
Display	<p>LCD display : 2.5' Colour LCD, resolution : 320 x 240                  Eyepiece resolution : 0.24' LCOS, resolution : 300 x 224</p>
Video	<p>USB Flash memory                  Storage capacity 16G                  Video resolution : H.264                  Video format : EIA (NTSC)                  Support video playback                  Record time : 30~50 hours</p>
Others	<p>USB 2.0 flash drive, able to connect with external U drive or export video through computer                  Working voltage : 8.4V, 2000mA                  Operating time : Around 3 hours                  Dimensions : 225mm x 122mm x 78mm                  Weight : 0.98 kg (Exclude batteries)</p>

### Demonstration :

