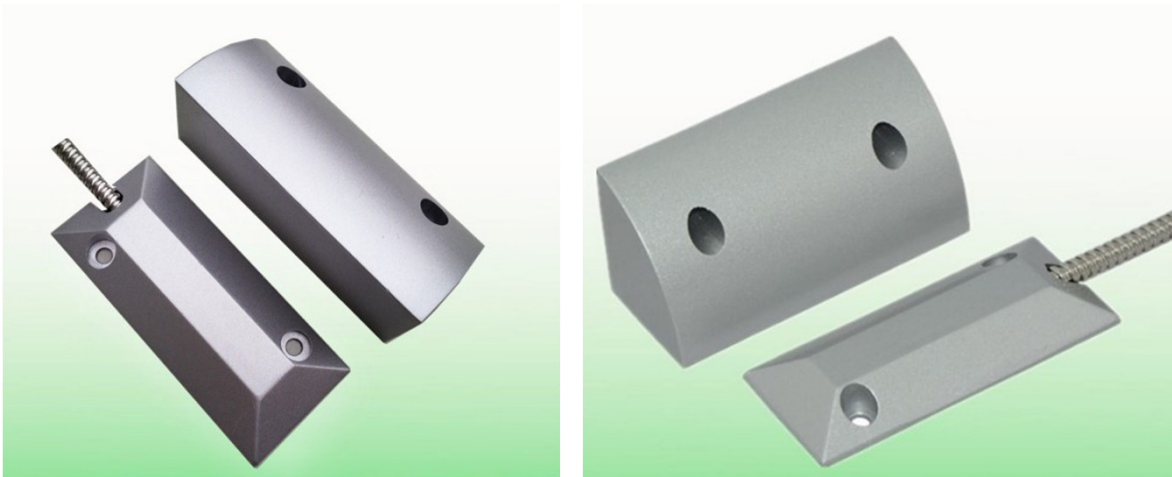


MDS-10 Shutter Sensor



Technical Specifications :

Color	Silver Grey
Output	NO NC COM
Action Gap (mm)	50-70mm
Max Current	0.5A
Max Voltage	DC48V
Dimensions	L87.5*W37.5*H10(Switch), L87.3*W41.5*H35(Magnetic)

Dimensions

