

AGB 232 Electric Lock Manual

I. Function description

The voltage of the electric lock is DC12V, the bolt of the electric lock is automatic, and in the electric lock there are special designed detected circuits and Lock cylinder detected circuits. They come out of the electric door through the lead wire, this will be more convenient for users to check the operating condition of the electric lock and door. Moreover, there are three ways for users choices to lock the door delayed.(Picture One)

II. To use and install instruction

1. Pls read this instruction book carefully before using , check if the main parts of the machine are inside the packing. Before installation, try to imitate the working condition of electric lock and connect it. After it works well , install it in the right way.
 2. The electric lock is composed of two parts.(1) aluminium alloy magnetic receiver (2) electric lock. When install it, the gap between the magnetic receiver and the electrical lock should not over 3MM.The hole in the bolt of magnetic receiver should just aim to the bolt of the electric lock. The aluminium alloy magnetic receiver should be in the same line with the electric lock.
 3. At the back of the electric lock there are red, black, blue, white, yellow, green, gray, orange, totally eight colors of head wires.(Picture One). The red wire should connect the positive pole,the black wire should connect the negative pole.(Picture Two) Blue, White, Yellow is the detection line of the Lock cylinder, Blue is NO, White is COM. Yellow is NC.(Picture Three A).When the Lock cylinder come out, NC cut. NO connects. Gray , Orange , Green is door detect line, Green is NO. Gray is COM. Orange is NC. (Picture Three B) When door is closed well, NO and NC connected and cross transferred.
 4. Adjustment of delay Automatic locking. It's in the middle of the electric lock (picture Four),Toggle the switch on/off can change the time of the delay automatic locking. The operation method pls check picture four, there are three ways, zero seconds, three seconds, six seconds.
 - 5 Installation (Picture Five)
- The requirements for glass doorframe : the glass should be 10-12 thick.

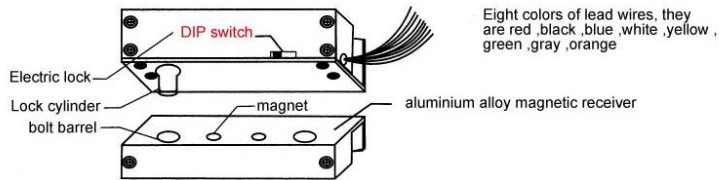
III. Technical Data

Working Voltage : DC12V
Red : Positive pole Black : Negative pole
Electric current: starting current 1.3A Working current:0.08A
Time adjustable lock delay: 0-6 adjustable
Bolt of lock : diameter 12.5MM stainless steel bolt ,length 15MM+1MM
The size of magnetic receiver:L148*W43*H25MM
The size of lock:L148*W43*H39MM
Unlock : electrify unlock or cut unlock

III. Parts installation

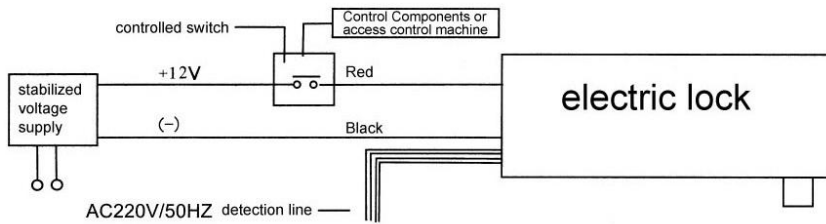
Rubber pad :L148*W35*H1MM (2pads) L148*W16*H1MM(2Pads)For magnetic receiver
iron sheet:L148*W35*H1 L148*W16*H1MM For magnetic receiver
Fixing screw :M6*12MM
hexagon wrench:3MM

AGB 232 Electric Lock Manual

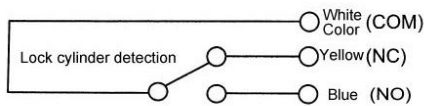


Eight colors of lead wires, they are red, black, blue, white, yellow, green, gray, orange

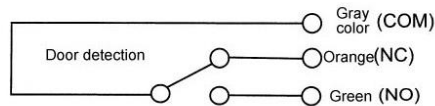
Picture One



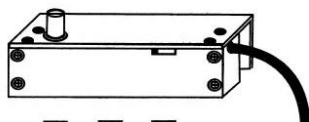
Picture Two



Picture Three A

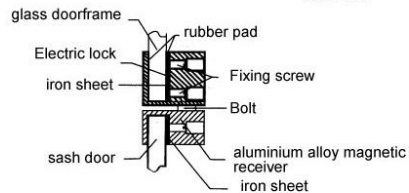
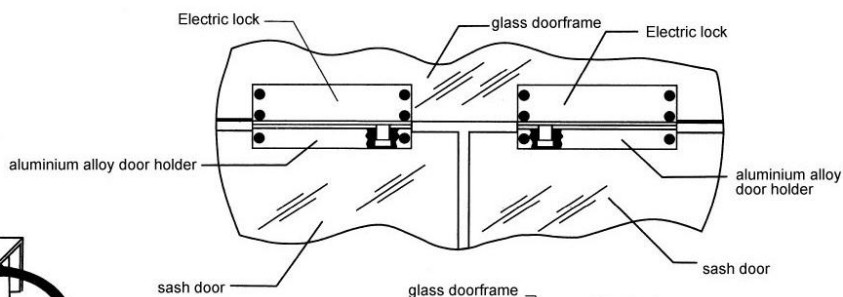


Picture Three B



Zero second Three seconds Six seconds

Picture Four



Picture Five